

VICTORIA THRELFALL PAINTINGS



Benediction
Acrylic on canvas
100 x 100cm



Victoria Threlfall

Paintings 2018 - 2022

“What art offers is space, a certain breathing room for the spirit”

John Updike

“One hopes for something resembling truth, some sense of life,
even of grace, to flicker at least in the work.”

Jasper Johns

The paintings in this show are mostly concerned with Circles. They present a self-contained world which does not make reference to anything outside the canvas, leaving it to the viewer to respond to the painting according to their own intuition.

I began using the Circle as a motif in 2015 after I was invited to create an exhibition in an industrial greenhouse. My first visit to the site was on a beautiful frosty February morning. When I looked up I was struck by the geometric shapes that the tracery of metal girders made as they enclosed the bright blue of the sky, and looking down I was presented by rows and rows of recently seeded pots laid out on a long low table, just bare soil outlined in the shape of a circle but charged with a huge sense of potential. These ostensibly abstract elements became the subject of that show and I have been working with the ideas that germinated at that time ever since.

The spiritual significance of the circle as a symbol of eternity, continuity and wholeness and its perfect symmetry make it, for me, the most appealing of geometric forms. It provides an armature from which to commence, a framework in which to operate. With the question of form resolved I can concentrate on what most interests me; colour and light and their ability to create mood.

Colour possesses me: it's changeable, chimerical nature and the way one colour butted up against another creates a dialogue, a discord or a surprise, the whole subject of a painting. Like a combination of notes in music or words in poetry it works directly on the soul .

Influenced by illuminated manuscripts and stained glass windows as well as the glow of a digital image emerging through a glass screen, I seek to create luminosity and radiance. Sometimes I use intensely bright pigments, exploring the way in which these colours can seem to pulsate with an inner energy, while in other works I employ multiple layers of transparent glazes, developing deep shadows from which light can emerge.

The Circle paintings are an ongoing but not exclusive part of my practice. In other paintings I work in an area that hovers between abstraction and figuration, using simple forms. I am interested in the way that the mind fashions meaning from the most rudimentary signifiers, how, for instance, a piece of folded card can be construed as a staircase, a series of vertical cylindrical forms as a curtain or a rhomboid on top of a rectangle as a box. I like to play with this ambivalence leaving open the possibility of a figurative interpretation.

In the painting “Eclipse” the brushstroke’s downward drag creates a broken edge making visible the process but also producing, inadvertently, a potential narrative with the ‘curtains’ being seen as tattered. I minimise the content in my paintings in order to create a sense of tranquillity. They are ‘slow’ paintings that reveal themselves quietly over time and seek to allow for that “flicker of grace” that Jasper Johns described.



Threshold
Acrylic on canvas
5ft x 4ft



In The Fold
Oil on canvas
4ft x 5ft





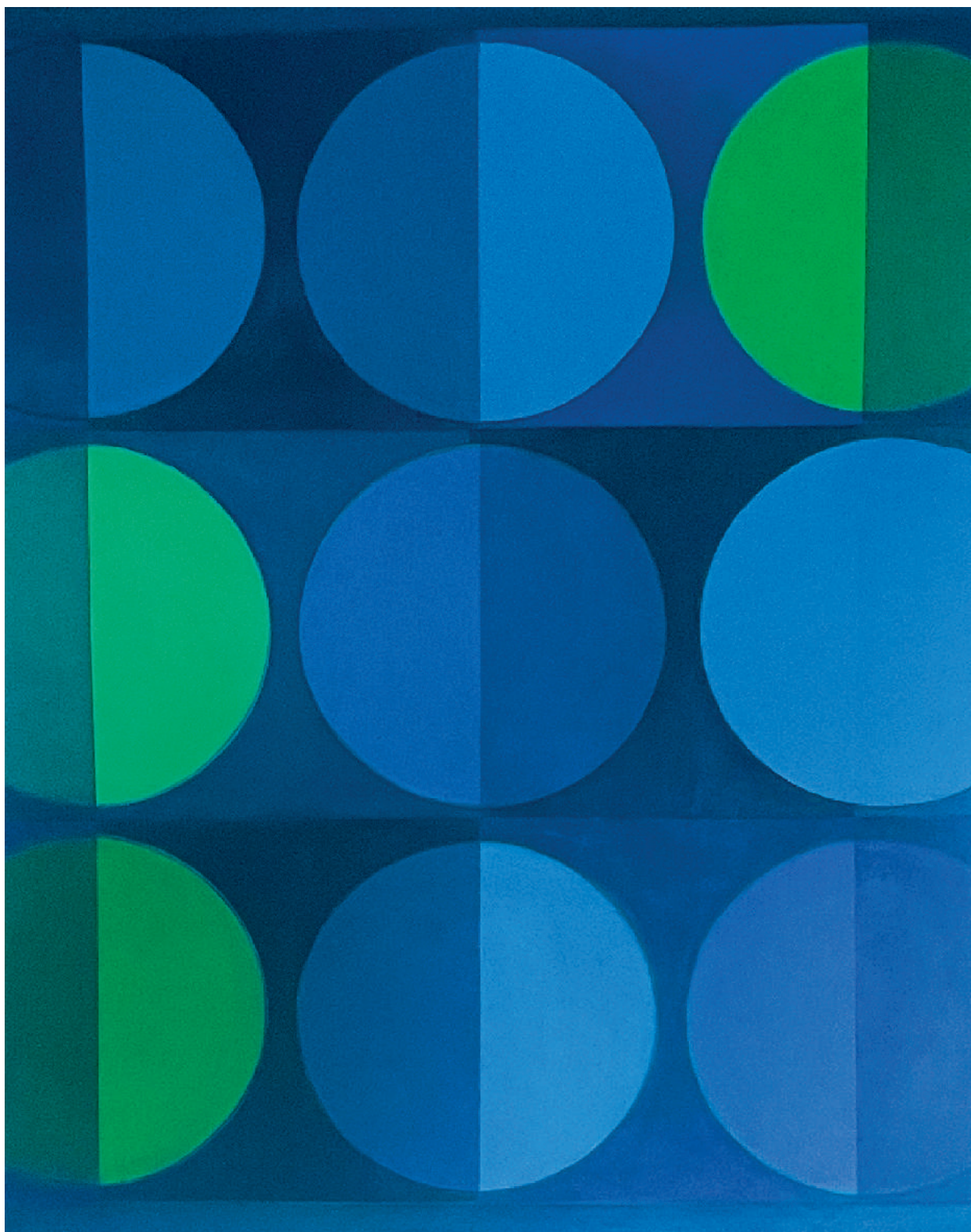
Herald
Acrylic on canvas
5ft x 4ft



Malachite
Acrylic on canvas
5ft x 4ft



Eclipse
Oil on canvas
100 x 150cm



Clewe
Acrylic on canvas
5ft x 4ft



In the summertime
Acrylic and Oil on canvas
5ft x 4ft

Cascade
Acrylic on canvas
5ft x 4ft



Lockdown in Marfa
Acrylic on canvas
65 x 45cm



Home
Acrylic and Oil on canvas
3ft x 4ft

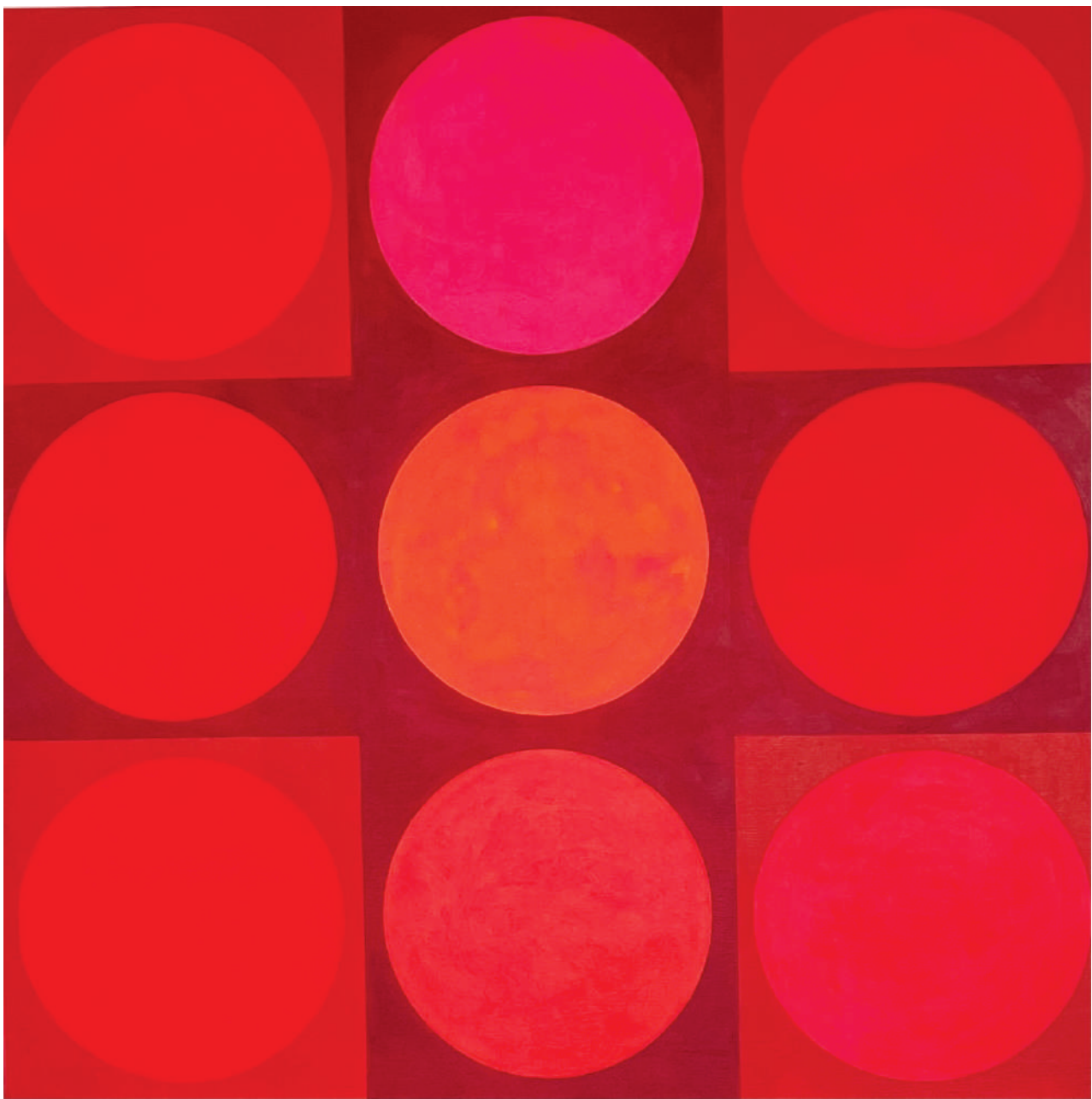


Terra Nullius
Gouache on paper
5ft x 4ft



Sailing To Byzantium
Acrylic on wood panel
60 x 52cm





The Cardinals
Acrylic on canvas
100 x 100cm

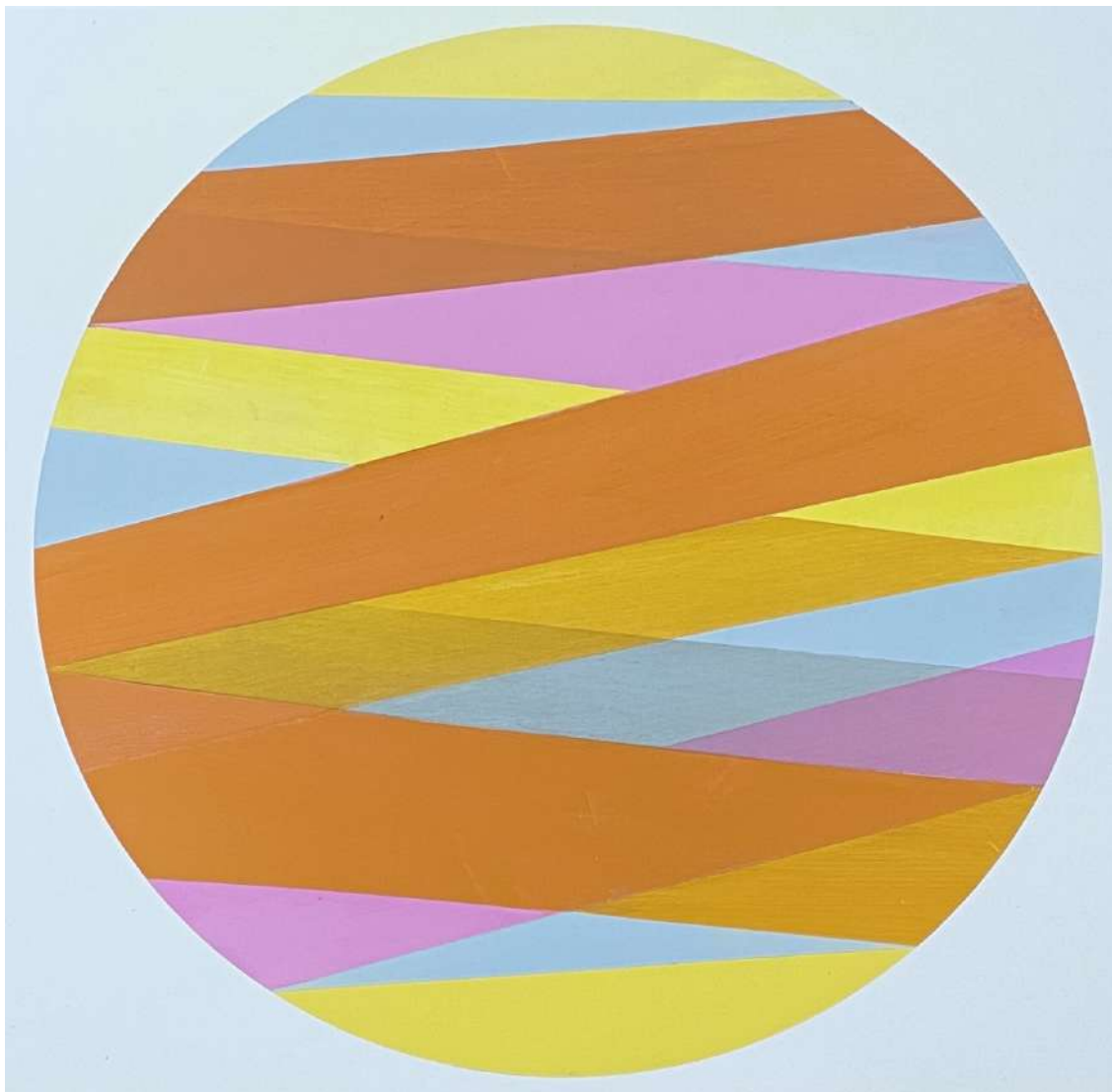


Edge
Acetate and paper collage
20 x 15cm

In Sundry Places
Acrylic on wood panel
30 x 40cm



Viriditas
Acrylic on aluminium
60 x 60cm



Flying West
Acrylic on aluminium
60 x 60cm



Betwixt

Acrylic on canvas
90 x 70cm



Daybreak
Acrylic on canvas
70 x 180cm



Dusk
Acrylic on canvas
70 x 180cm



Icebox
Acrylic on wood panel
60 x 40cm



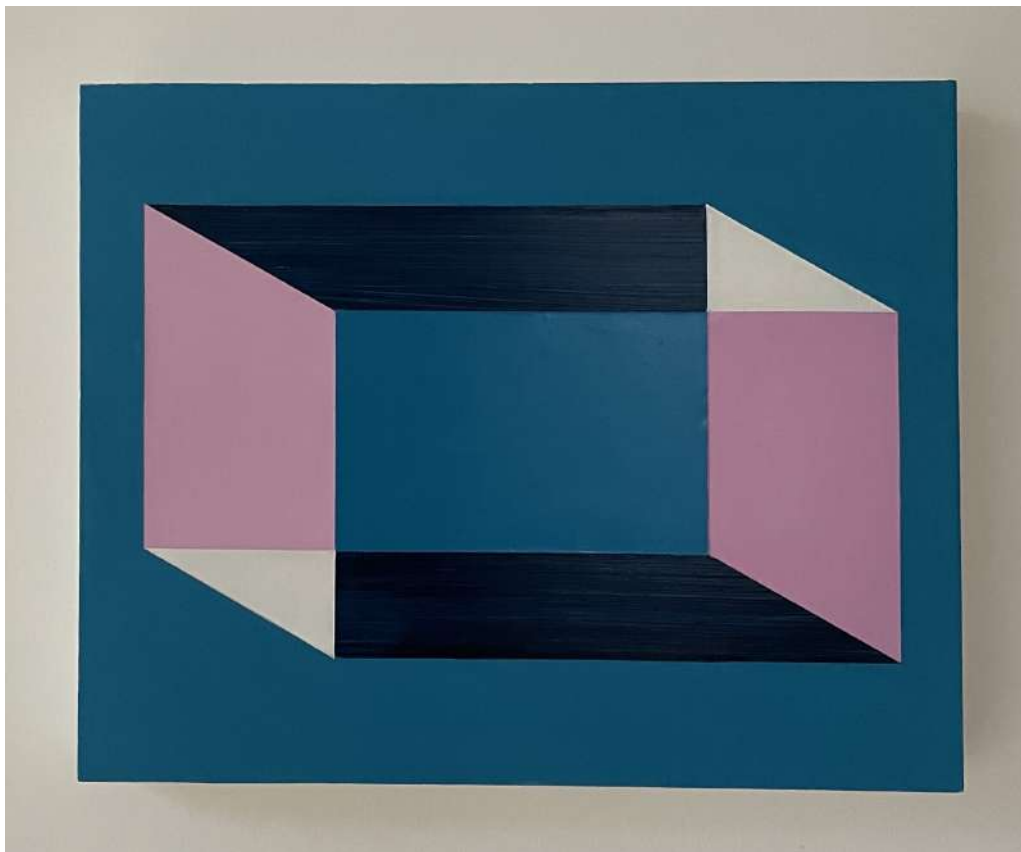
Glass ceiling
Acrylic on wood panel
60 x 40cm



Emblazon
Acrylic on wood panel
30 x 30cm



Aloft
Acrylic on wood panel
30 x 30cm



Peekaboo

Acrylic on wood panel
40 x 60cm

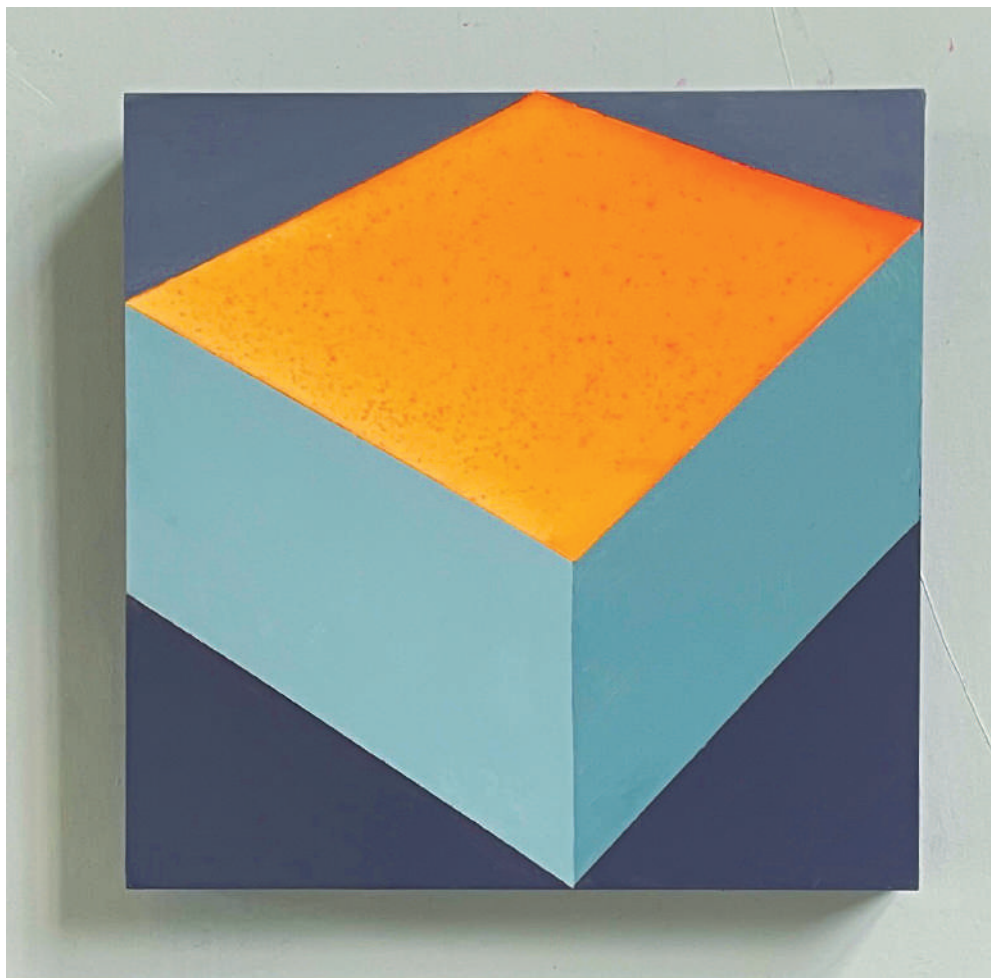
Partition

Acrylic on wood panel
50 x 40 cm



Zeta

Acrylic and collage on wood panel
40 x 30cm

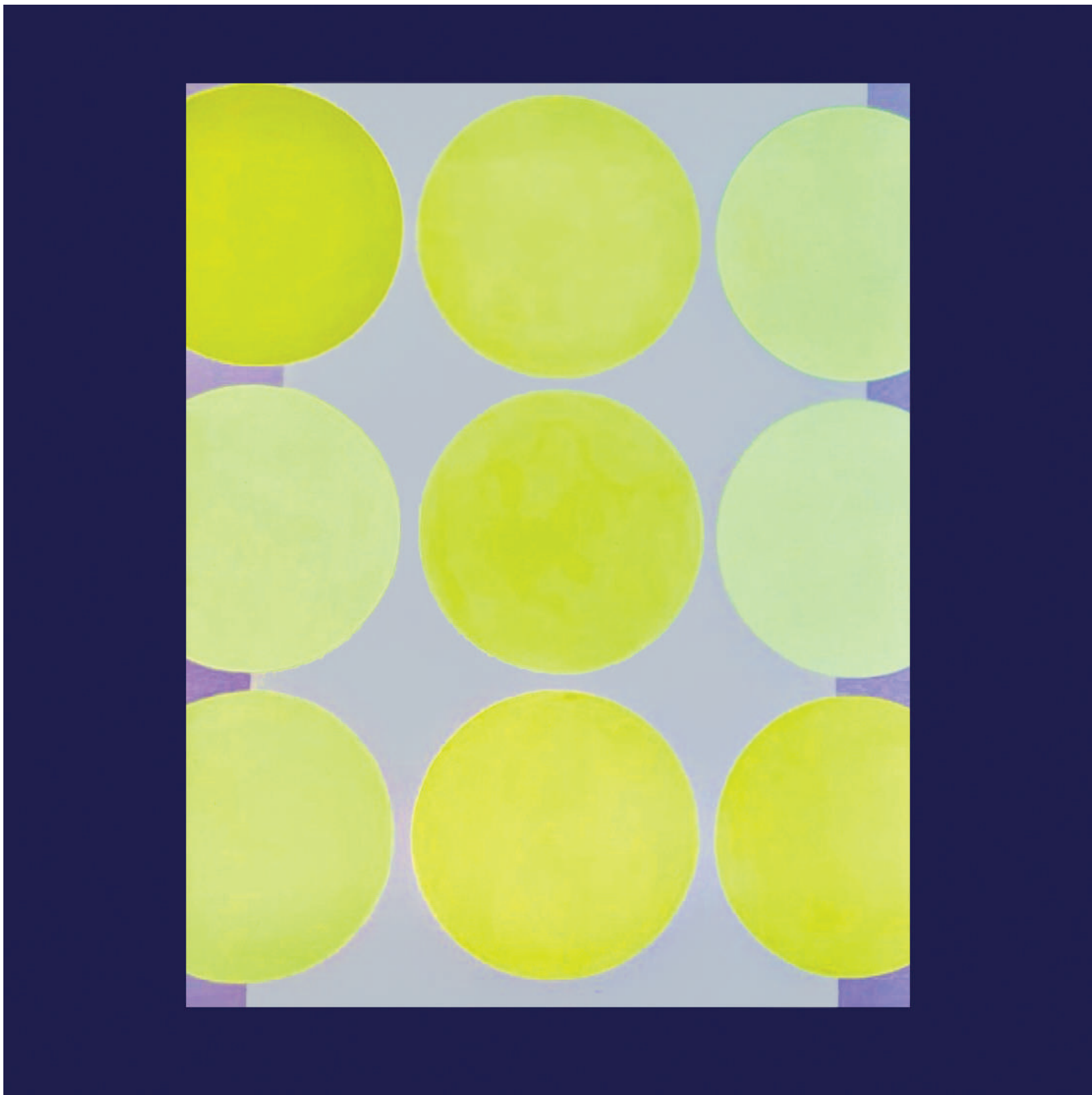


Fire box

Acrylic on wood panel
30 x 30cm



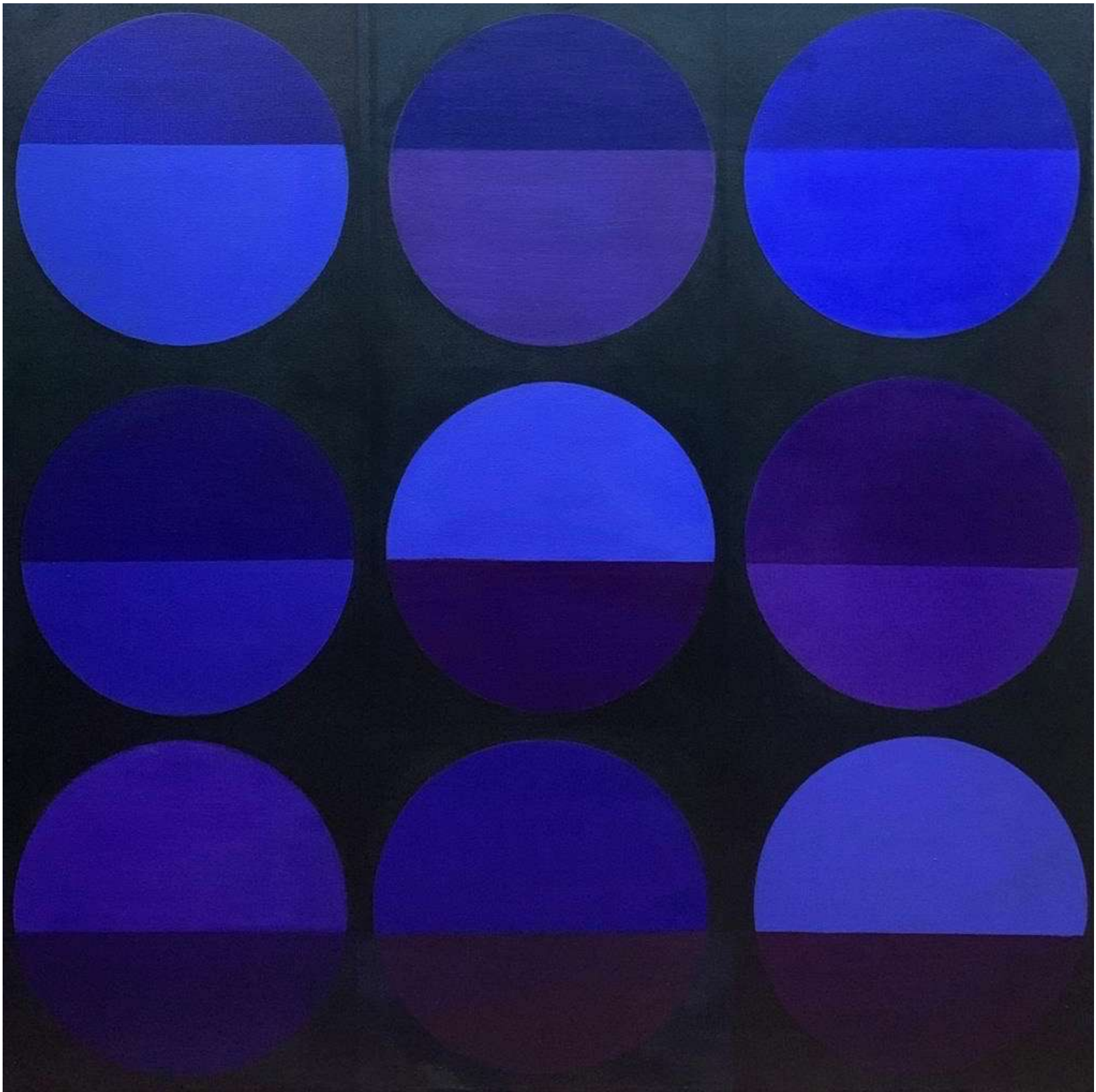
Theta
Acrylic and collage on wood panel
30 x 40cm



Pilgrim

Acrylic on canvas

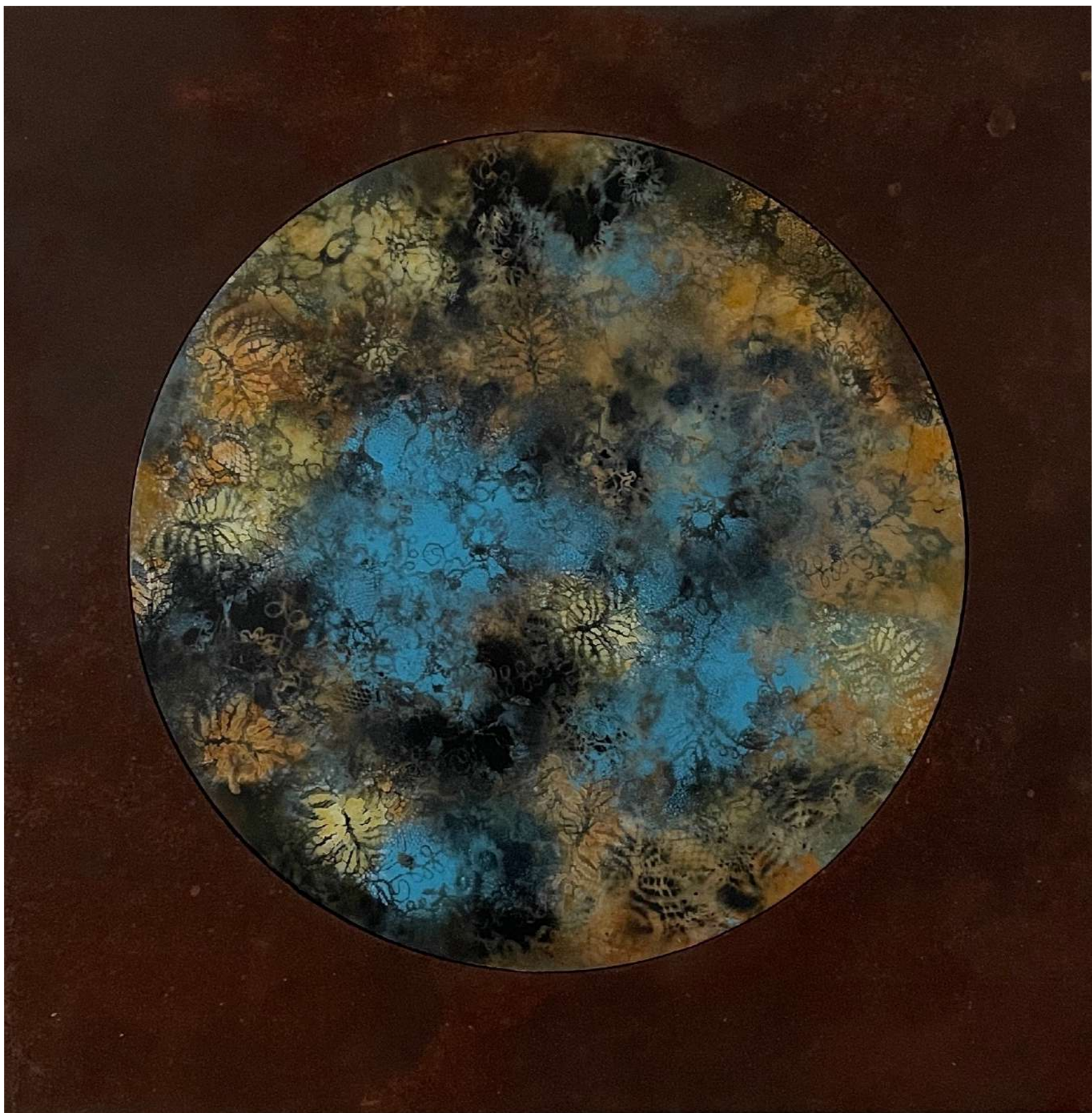
4ft x 5ft



Night Light

Acrylic on canvas
100 x 100 cm





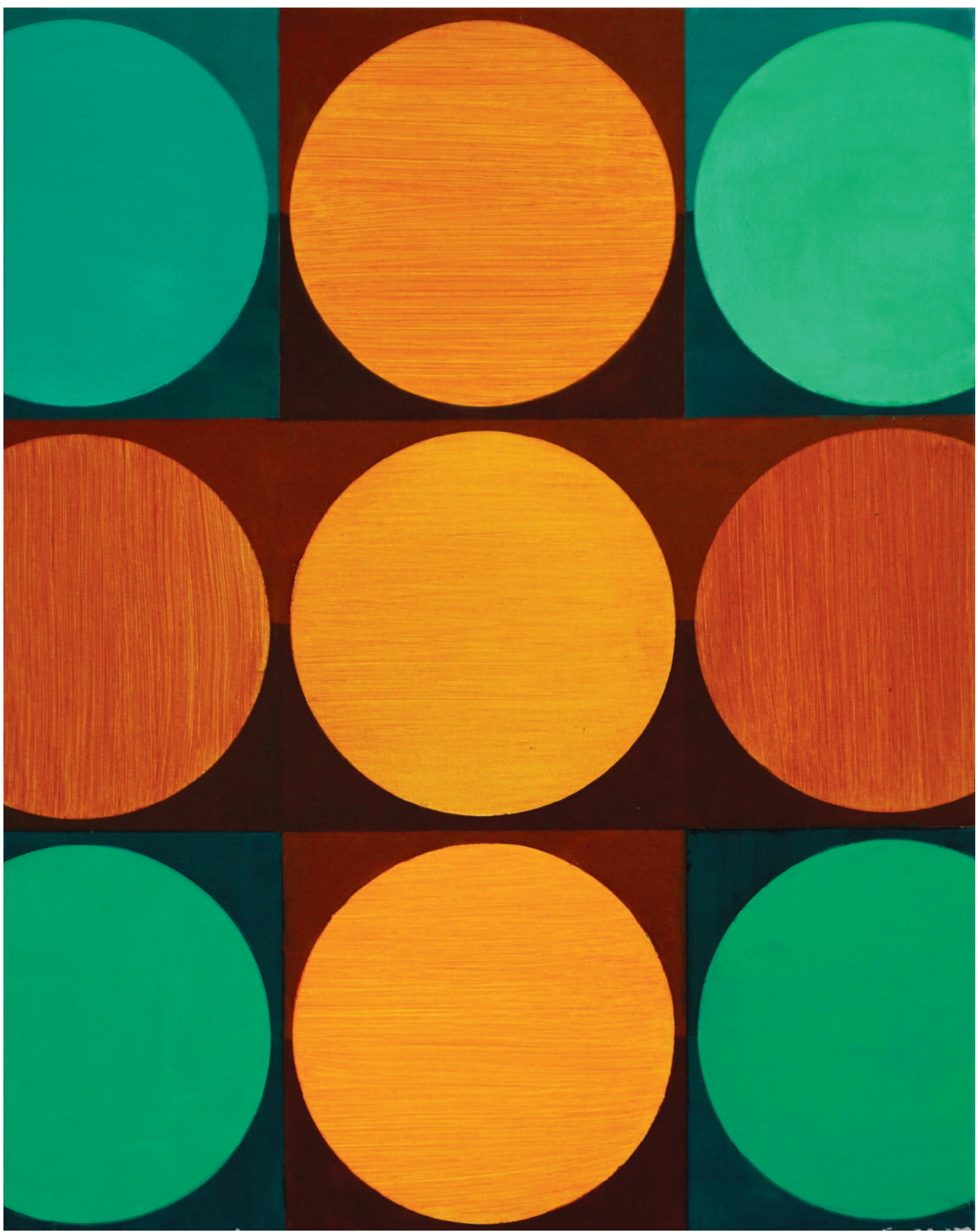
Treasury
Acrylic on steel with rusted steel surround
60 x 60cm



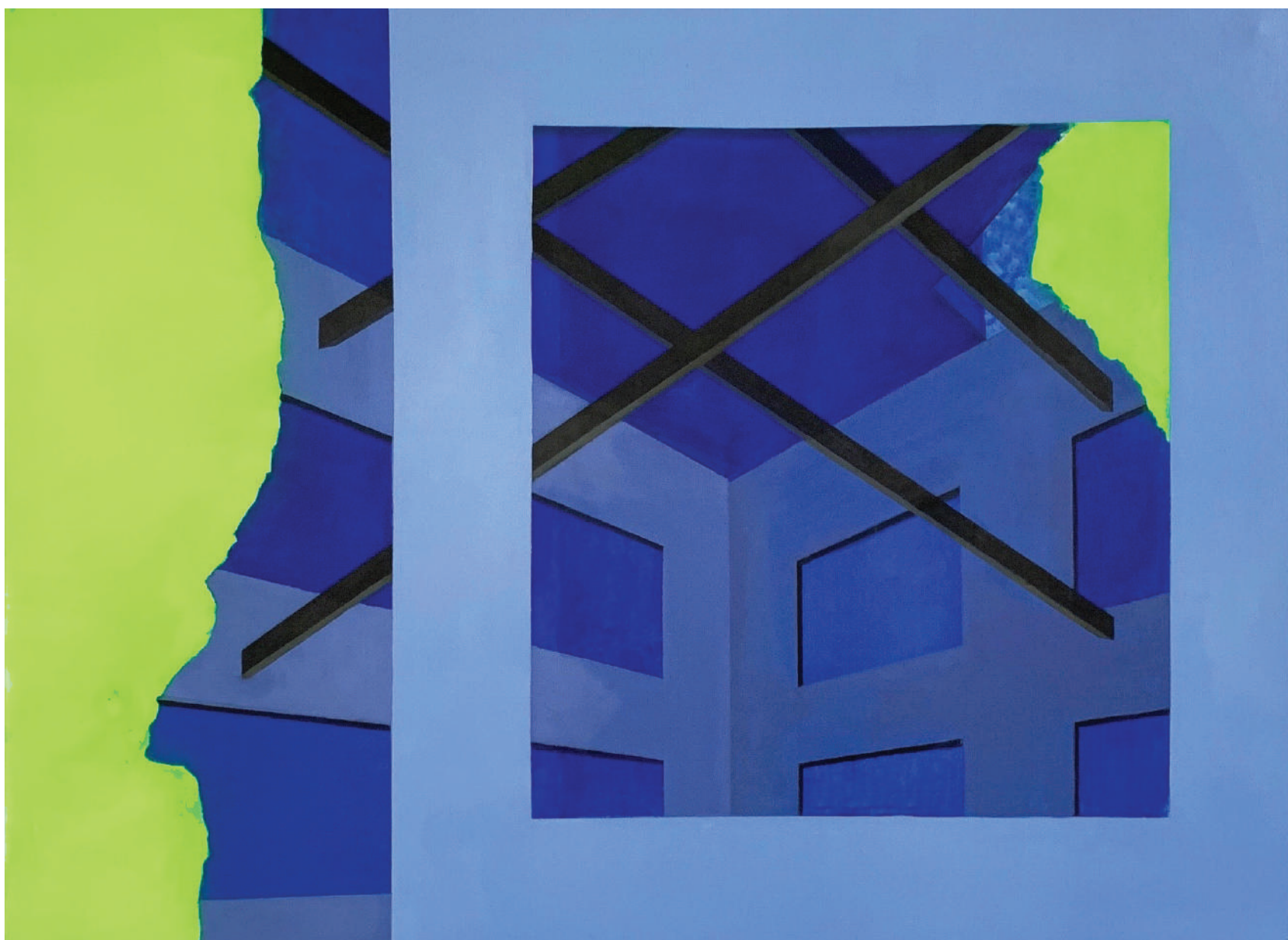
"Damask'd in flowers"
Acrylic on aluminium
60 x 60cm



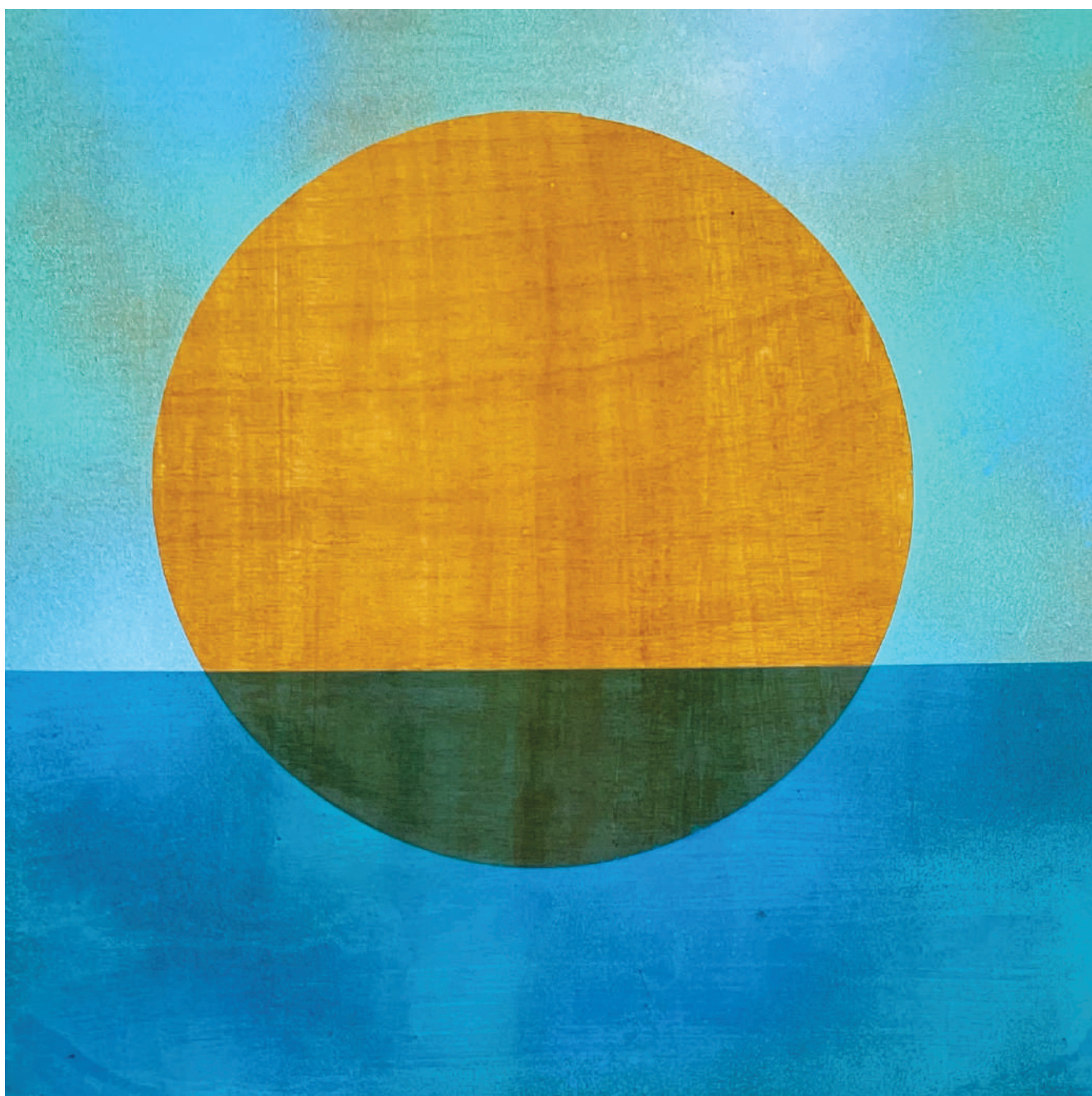
Iota and Kappa
Acrylic on wood panel
30 x 30cm



“And still more”
Acrylic on canvas
70 x 60cm



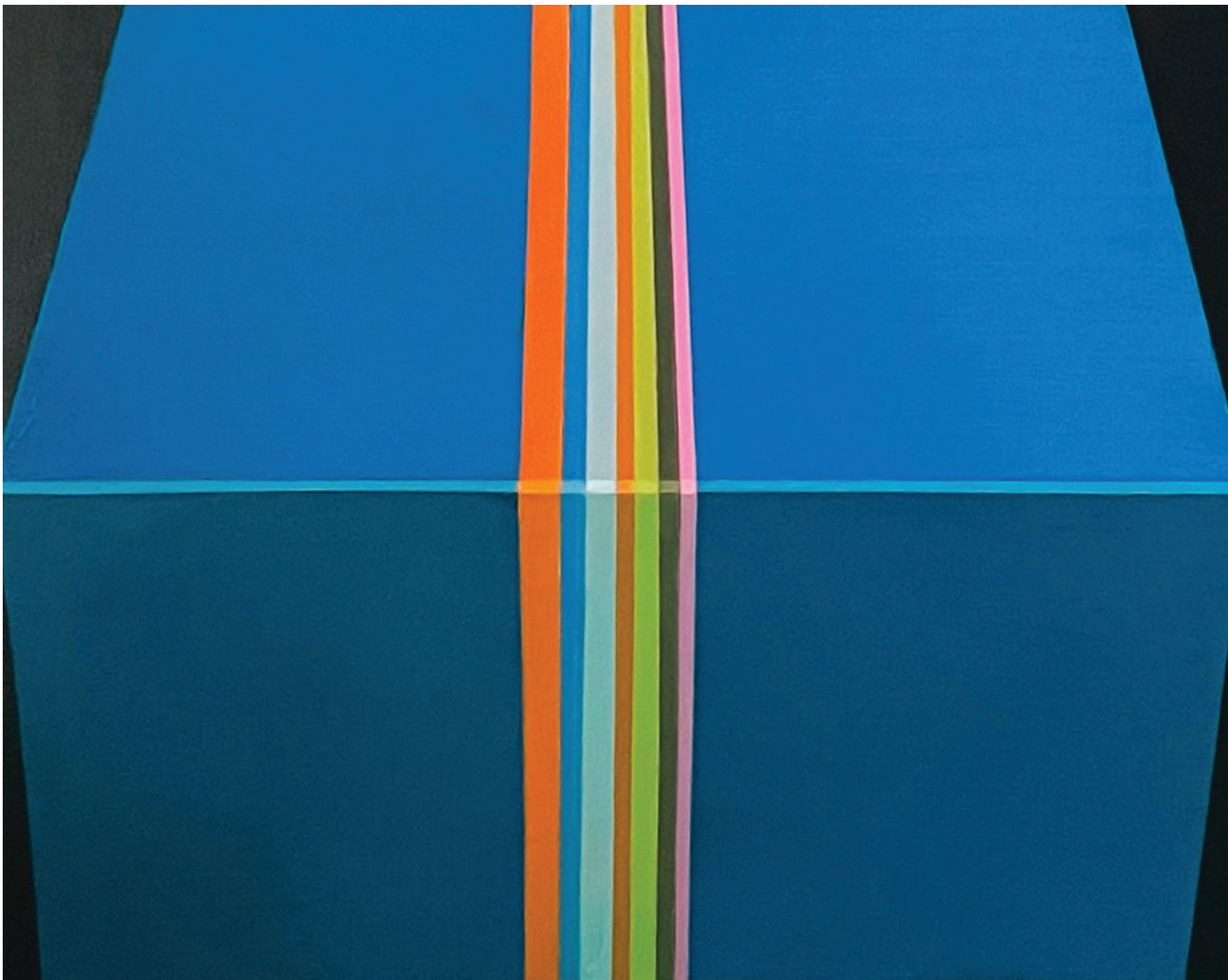
Elsewhere
Acrylic on canvas
92 x 122cm



Alpha
Acrylic on wood panel
30 x 30cm



Gamma
Acrylic on wood panel
40 x 30cm



GIFT
Acrylic on wood panel
30 x 40 cms

